

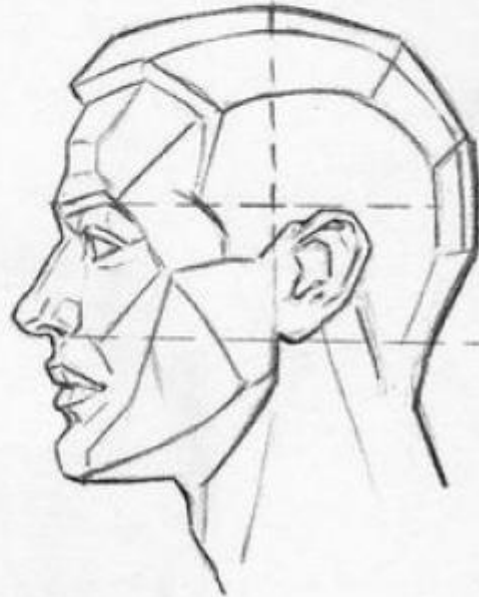
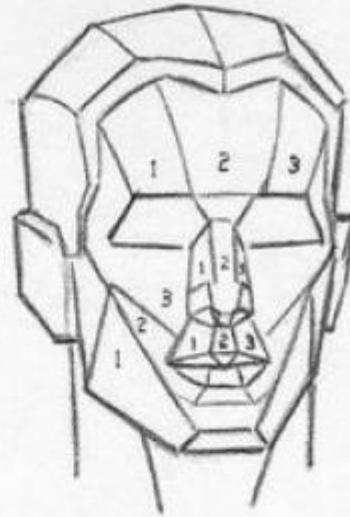
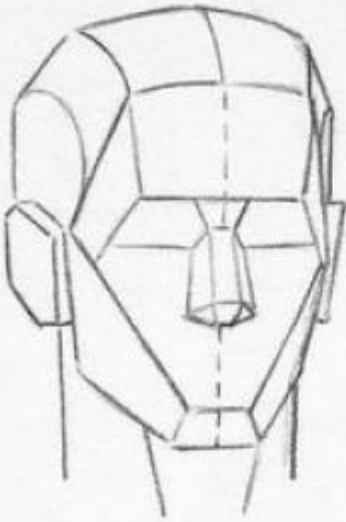
# GÖRSEL SANATLAR

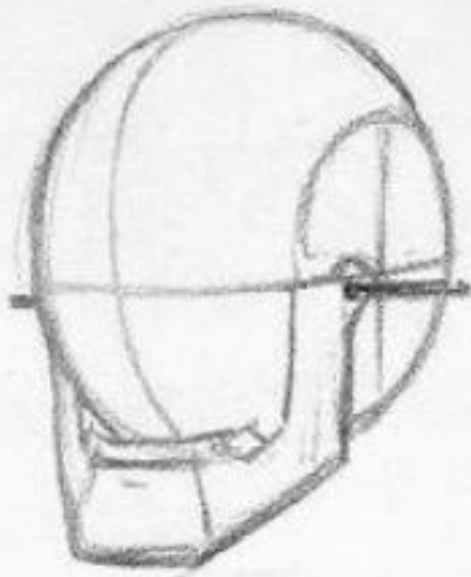
MEHMET KURTBOĞAN

# PORTRE ÇİZİMİ



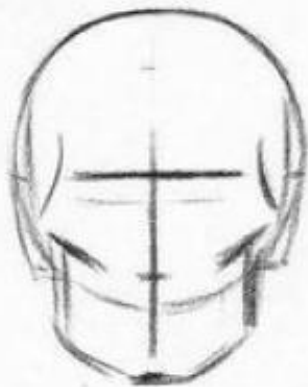




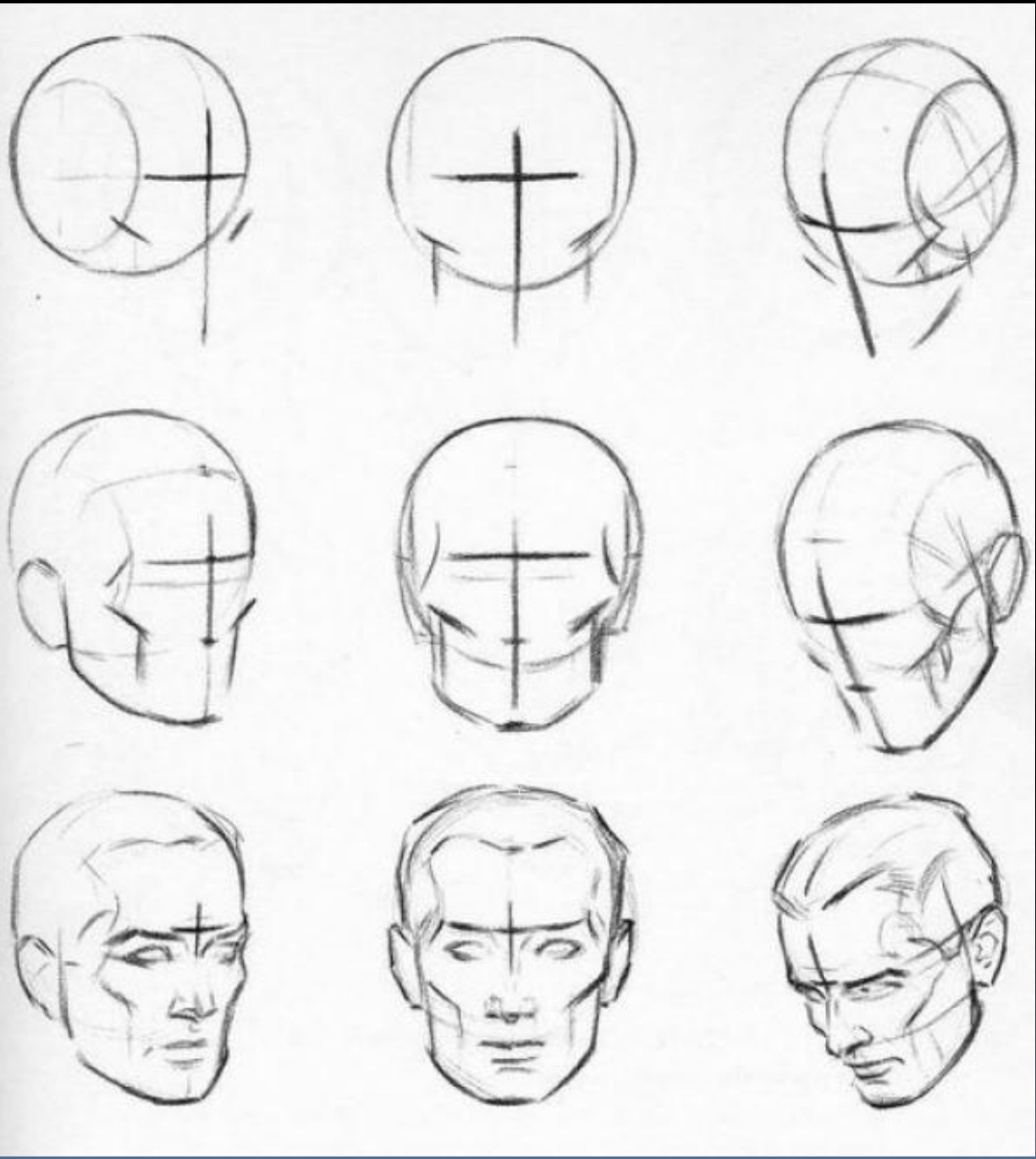




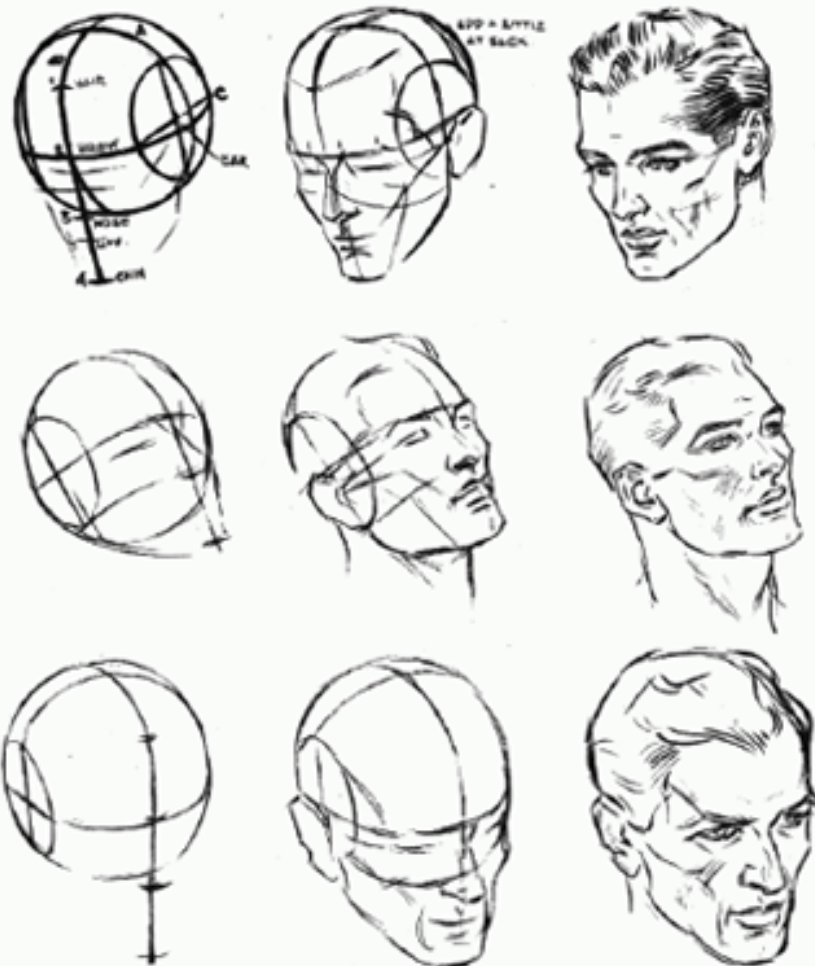






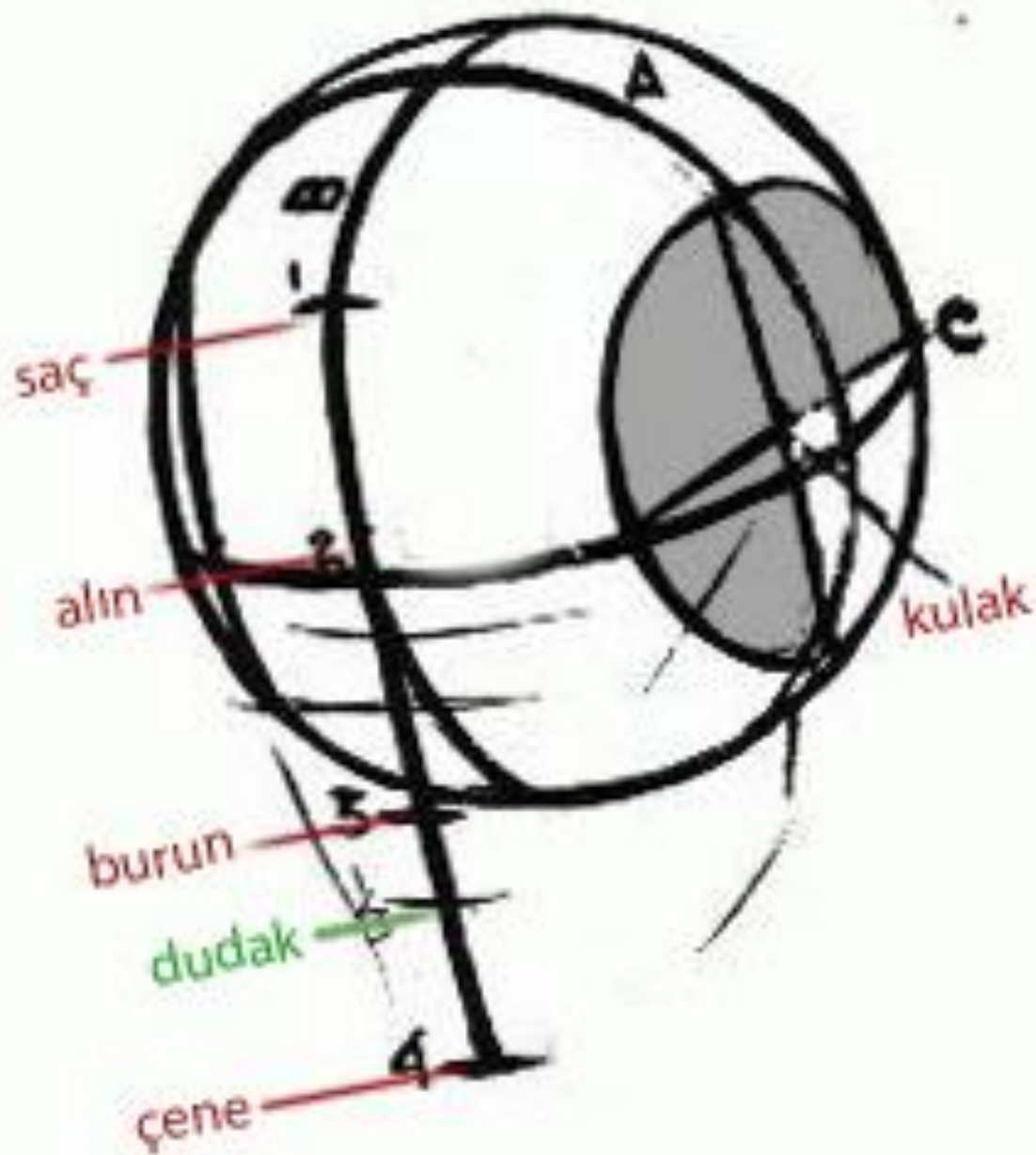


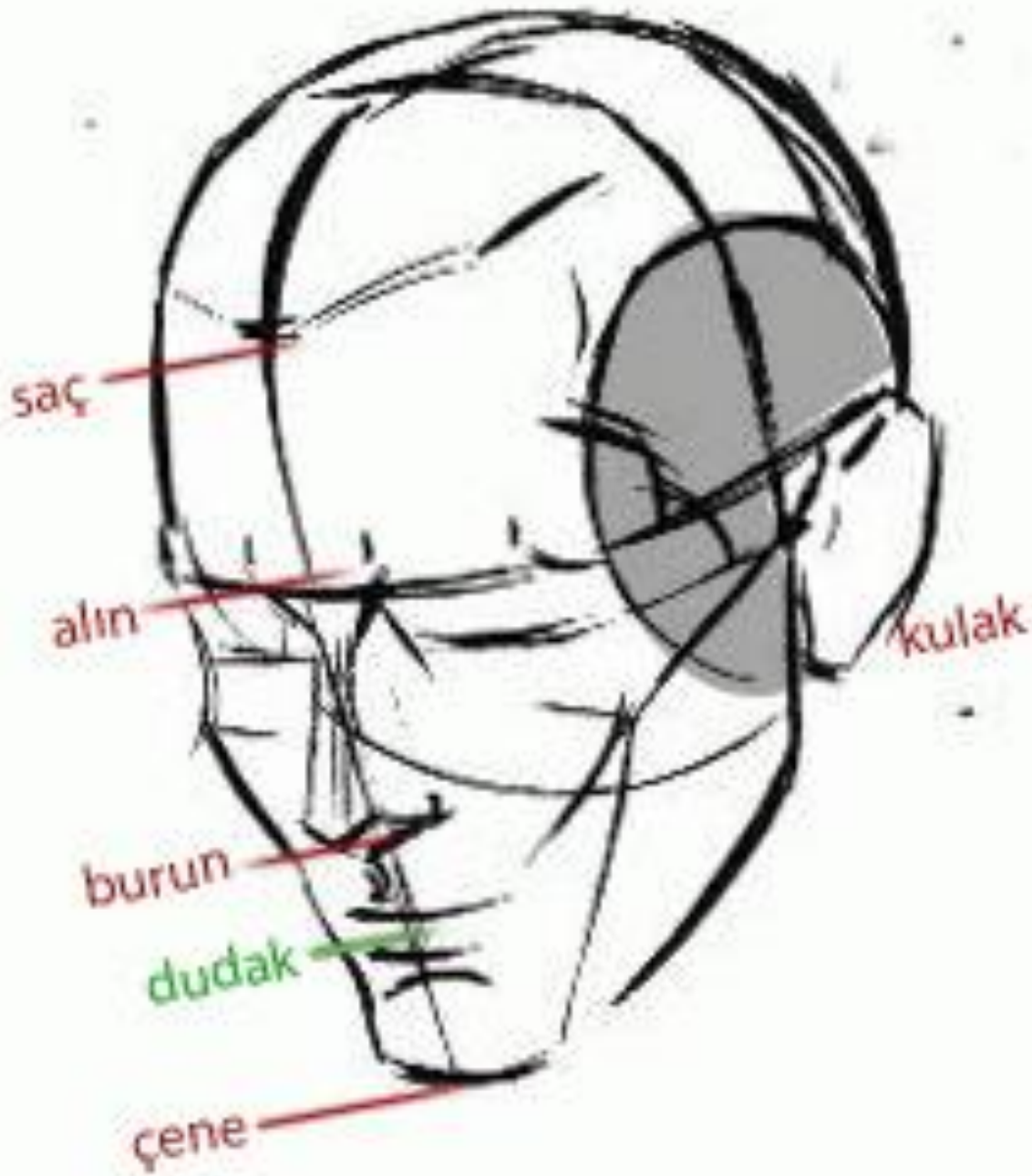
## HEAD BUILDING

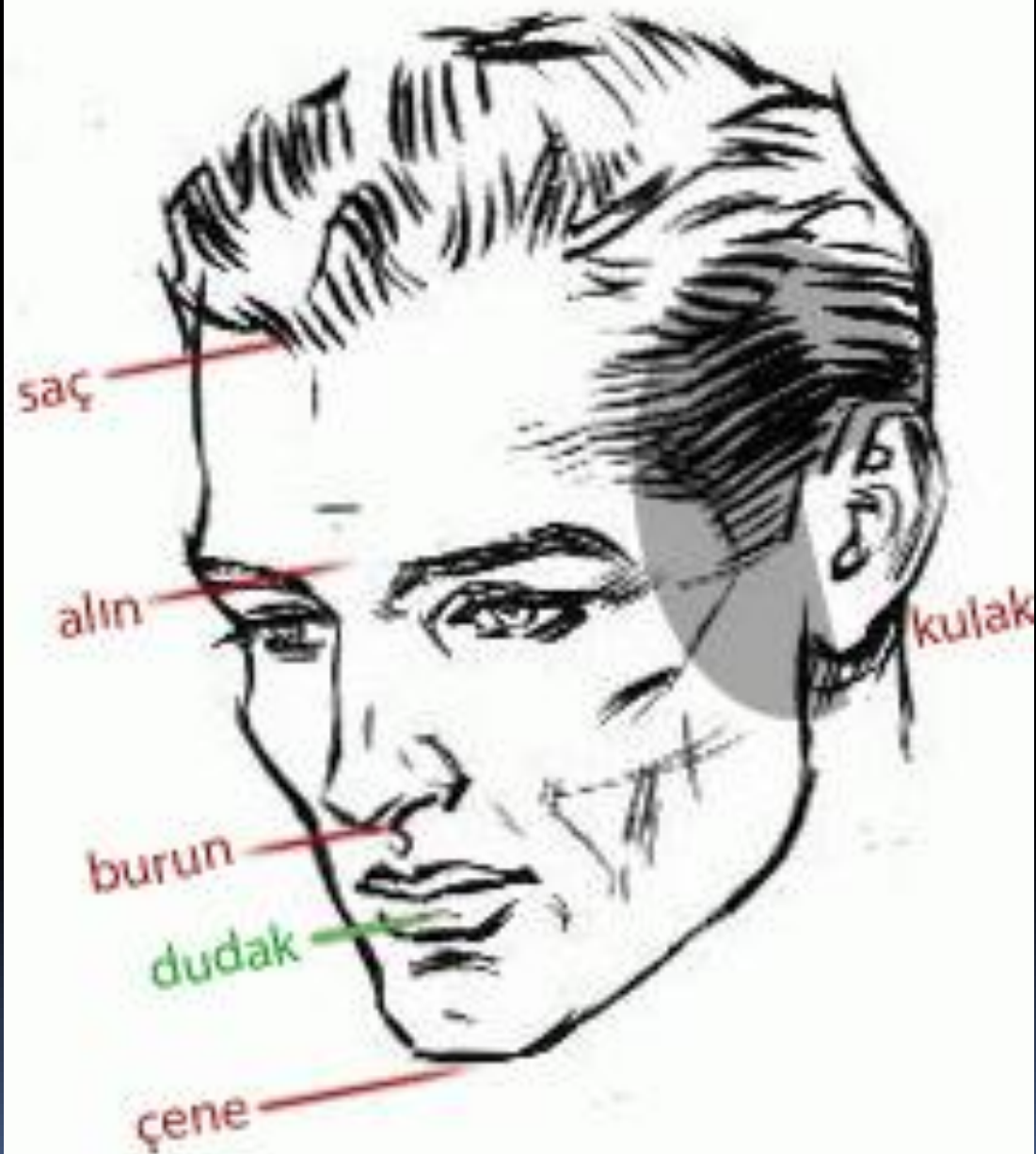


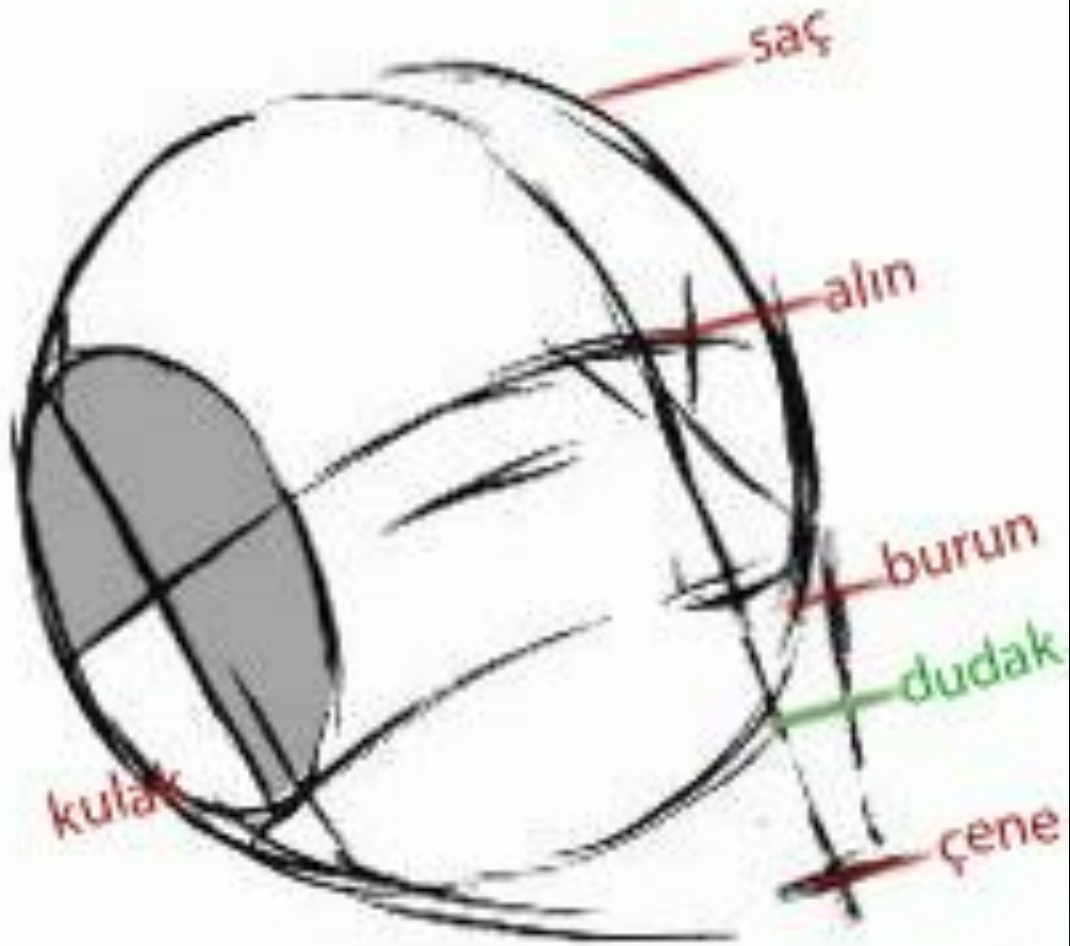
### HOW TO CONSTRUCT A HEAD.

DRAW A BALL. DIVIDE BALL INTO SECTIONS SO THAT YOU HAVE A MIDDLE LINE, DIVIDING BALL 3 WAYS (LINES A, B AND C). TAKE ONE FOR MIDDLE LINE OF FACE. THE OTHER TWO WILL BE AN EAR LINE AND A LINE OF BROWS. DROP MIDDLE LINE OF FACE OFF BALL. DIVIDE INTO 4 PARTS THAT APPEAR EQUAL, EACH PART EQUAL TO HALF OF THE DISTANCE FROM BROWLINE TO TOP OF BALL. SLICE OFF SIDES BY DROPPING EAR LINE STRAIGHT DOWN. PLACE BAR AT INTERSECTION OF LINES A AND C. NOW BUILD IN JAW AND FEATURES. THIS PLAN IS MORE THOROUGHLY COVERED IN "FUN WITH A PENCIL".

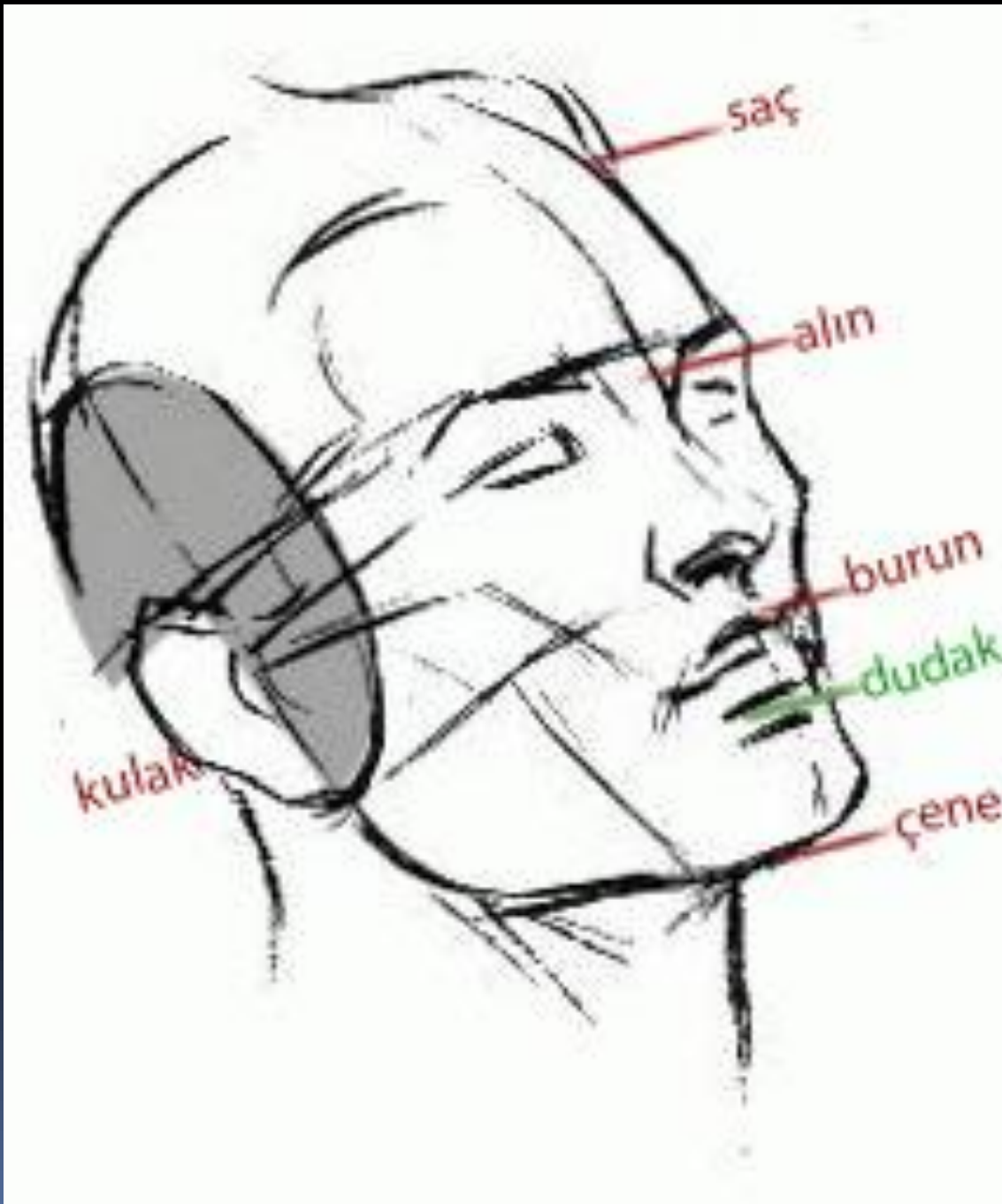












kulak

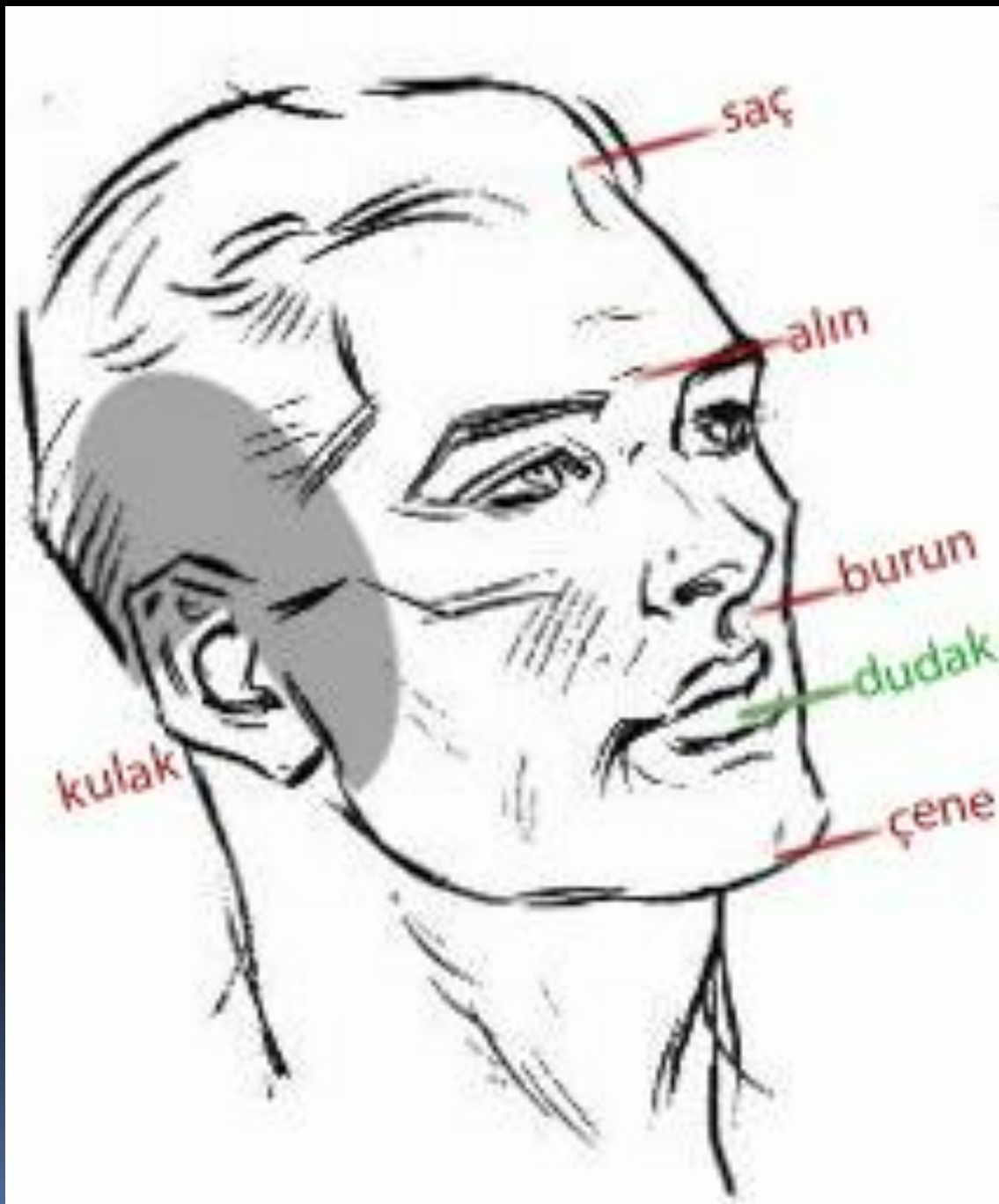
saç

alın

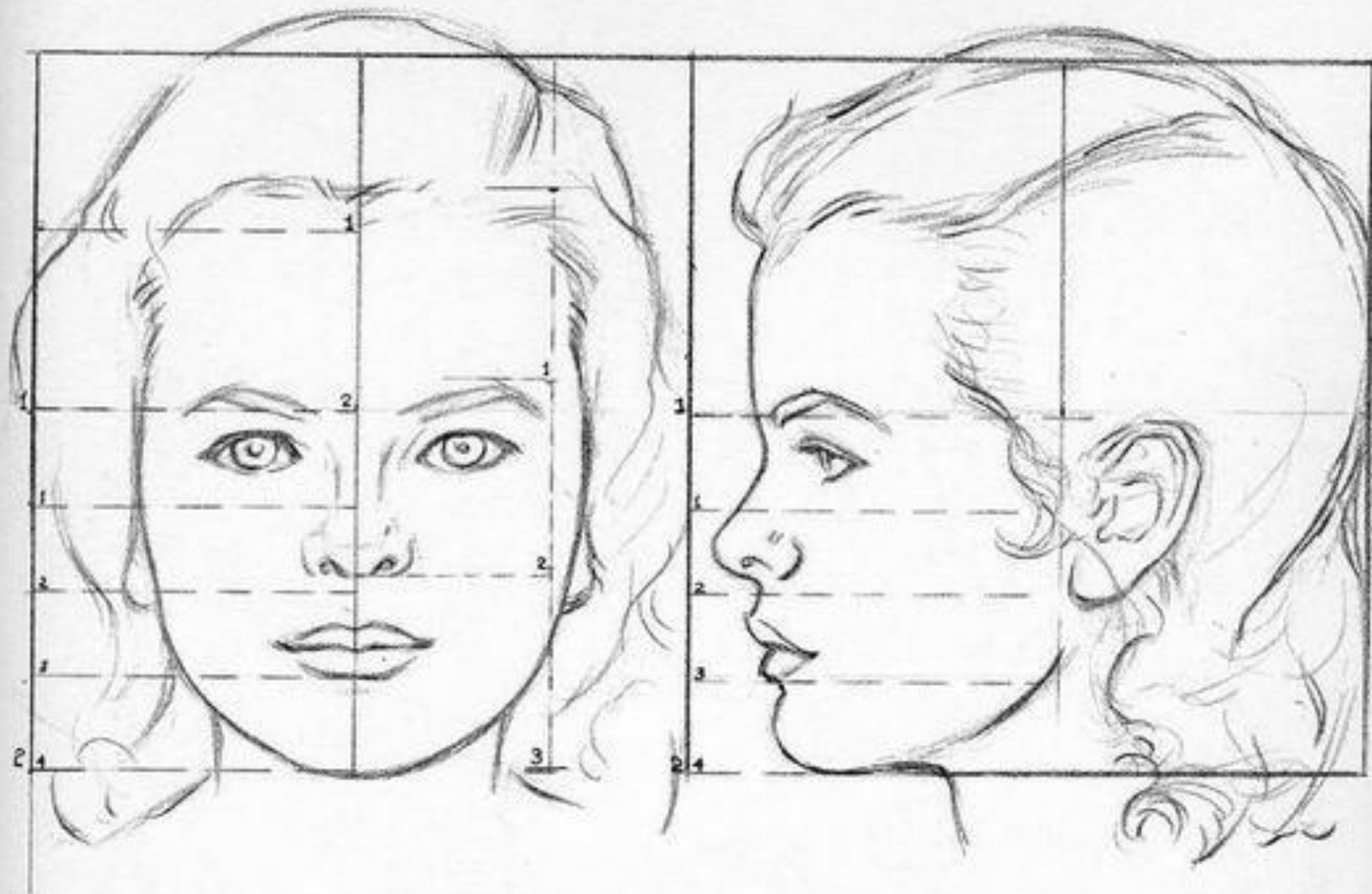
burun

dudak

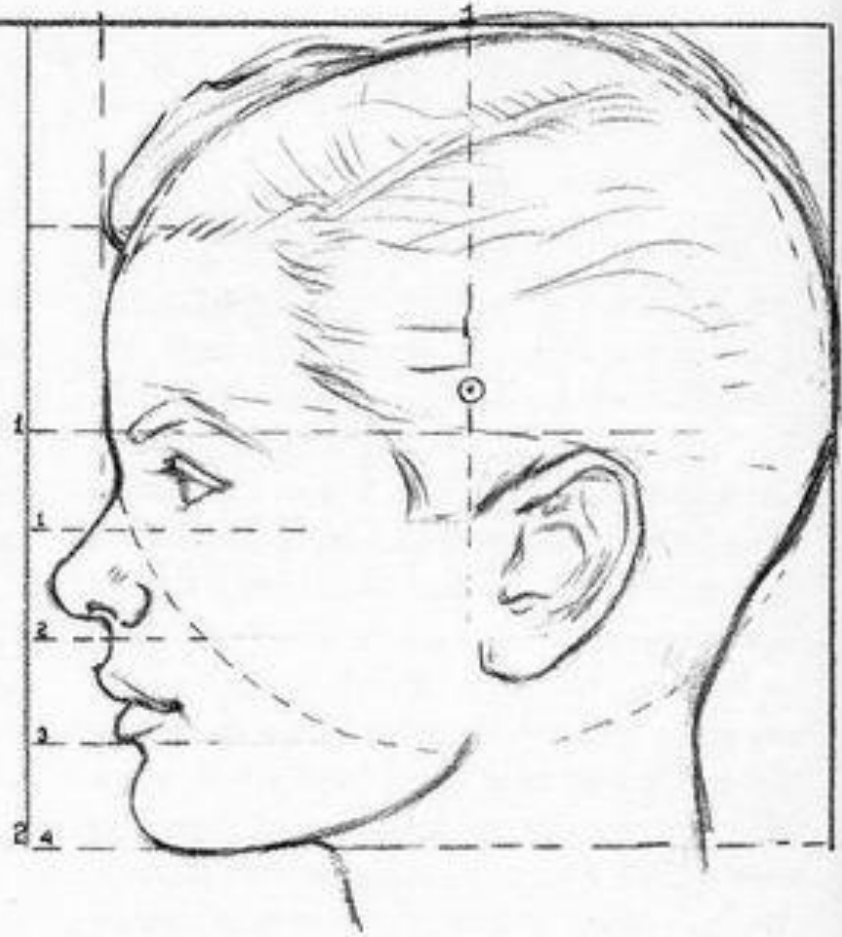
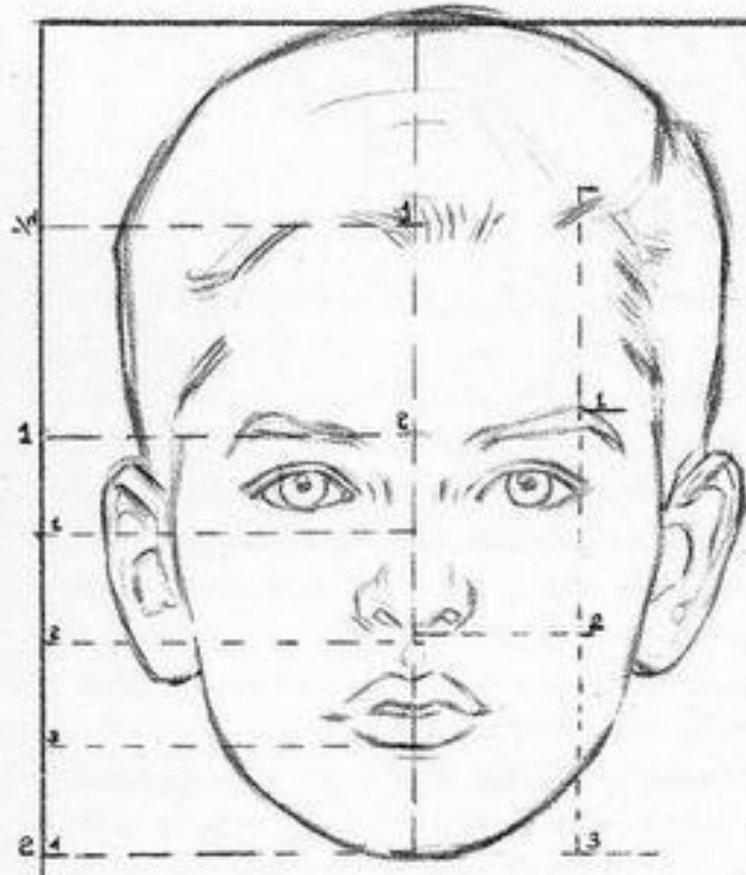
çene





















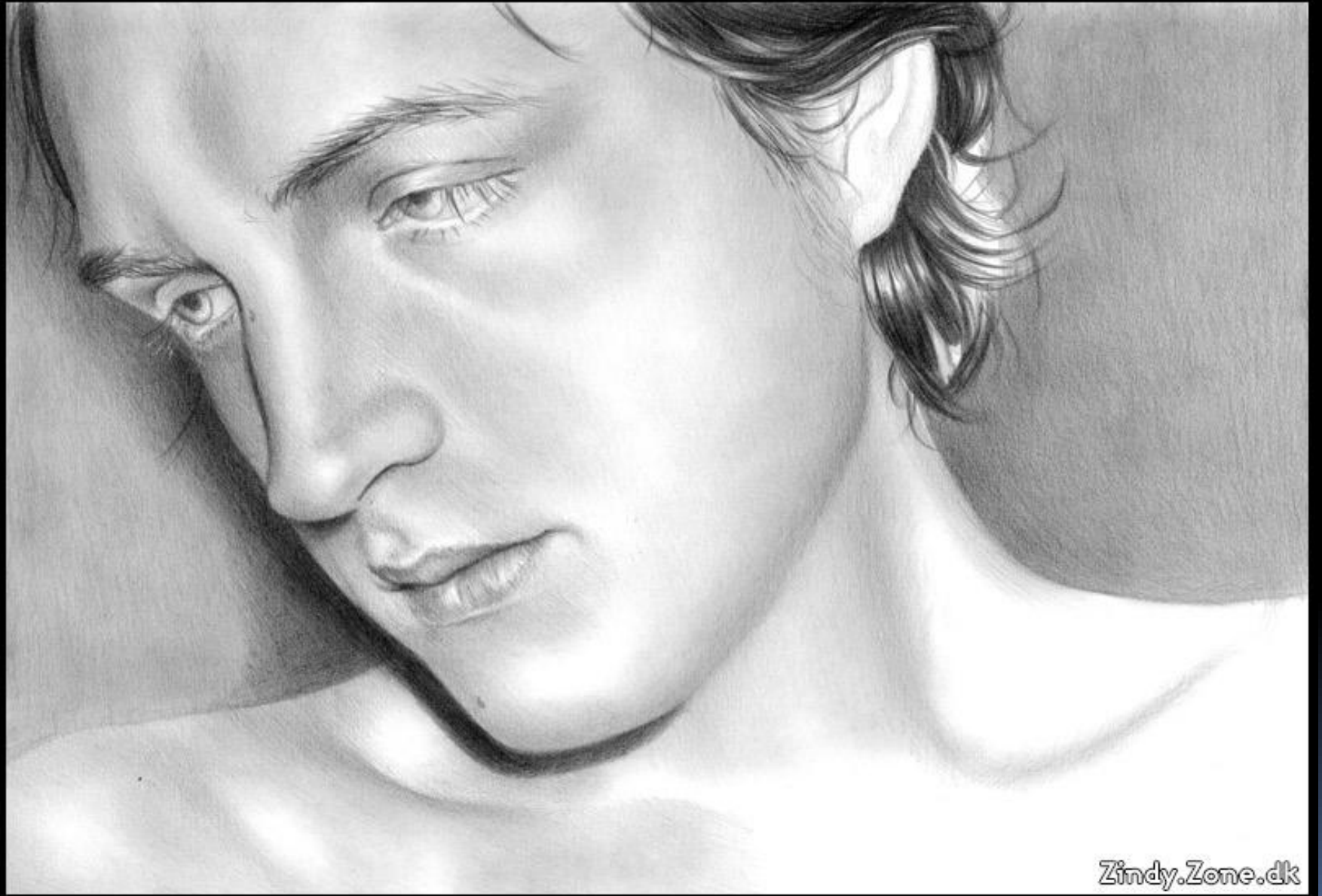




Zindy.Zone.dk

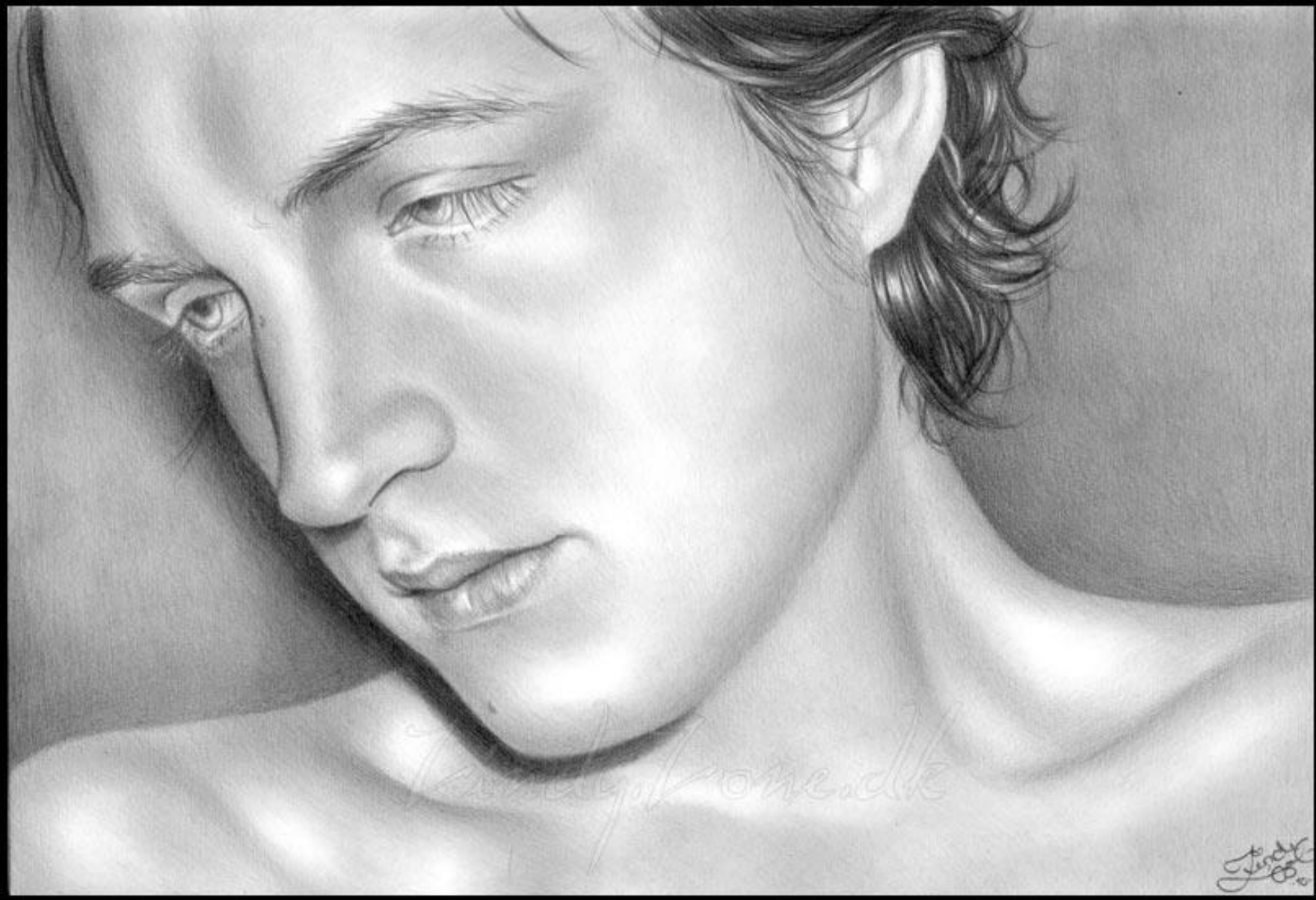


Zindy.Zone.dk

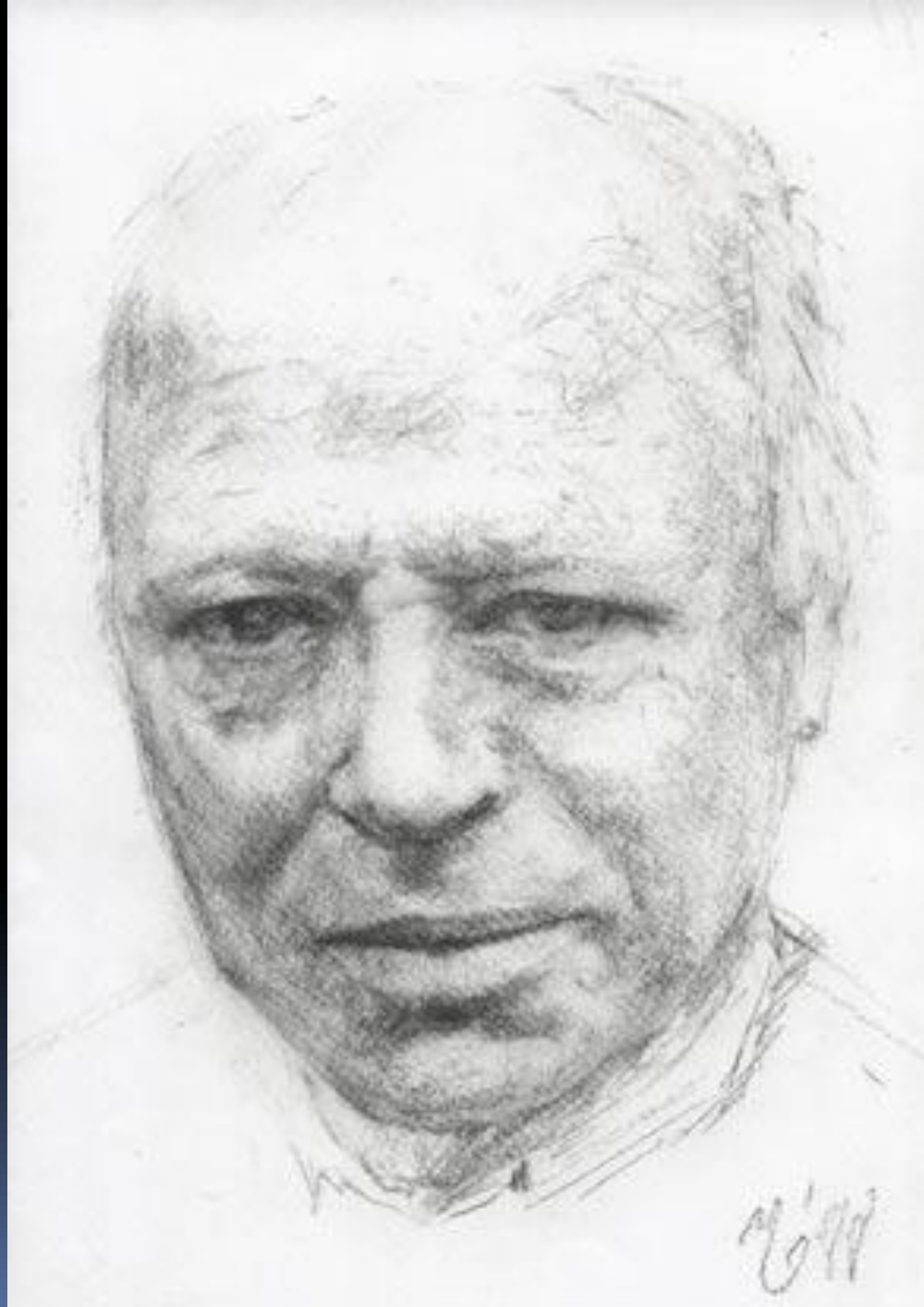


Zindy.Zone.dk











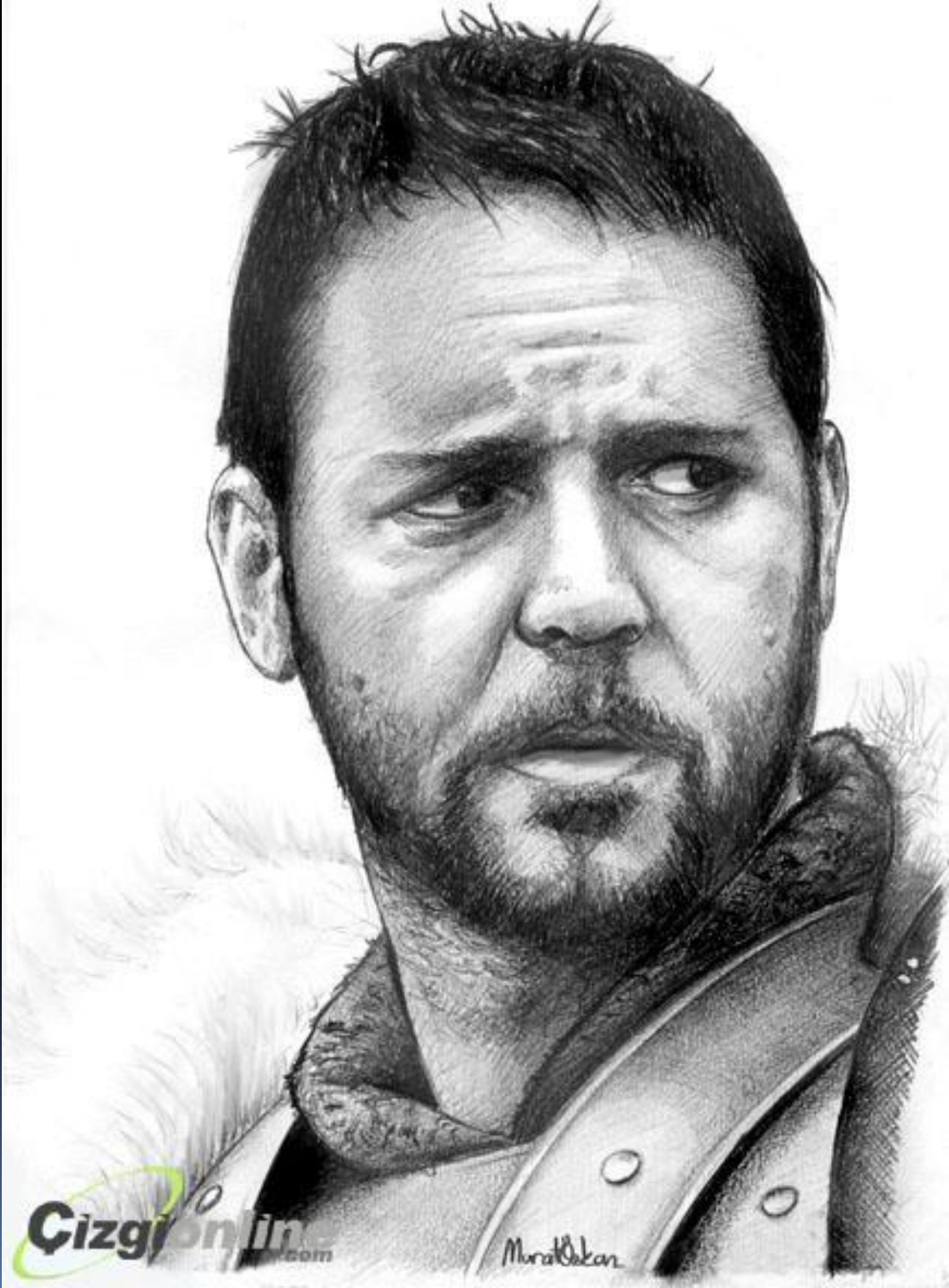




To my friend Mrs Swinton  
Feb. 6. 1906







CizgiOnline.com

Murat Bekar

